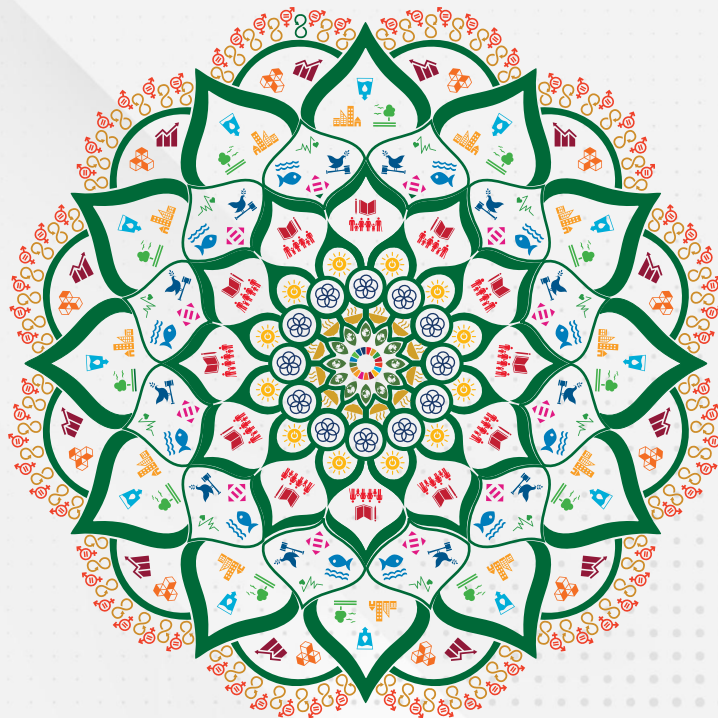




OSIF 2.0: SDG Indicators Ready Reckoner

Handlooms, Textiles & Handicrafts Department

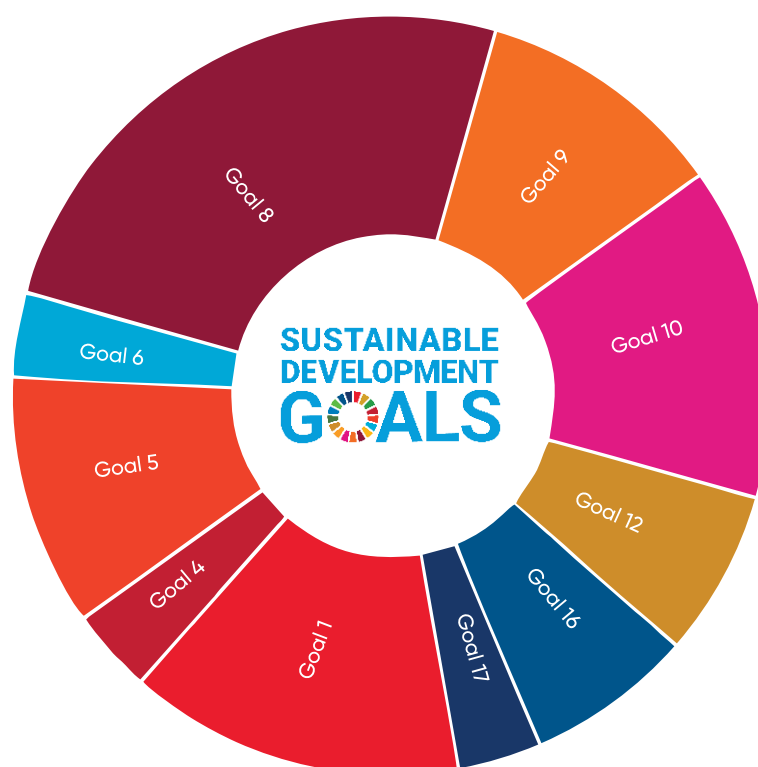


Planning & Convergence Department
Government of Odisha

OSIF 2.0: SDG Indicators Ready Reckoner

Abstract

Handlooms, Textiles & Handicrafts Department



Goal	1 NO POVERTY	4 QUALITY EDUCATION	5 GENDER EQUALITY	6 CLEAN WATER AND SANITATION	8 DECENT WORK AND ECONOMIC GROWTH	9 INDUSTRY, INNOVATION AND INFRASTRUCTURE	10 REDUCED INEQUALITIES	12 RESPONSIBLE CONSUMPTION AND PRODUCTION	16 PEACE, JUSTICE AND STRONG INSTITUTIONS	17 PARTNERSHIPS FOR THE GOALS
No. of Targets	4	1	1	1	5	3	3	2	1	1
No. of Indicators	4	1	3	1	7	3	4	2	2	1

OSIF 2.0: SDG Indicators Ready Reckoner

© Copyright 2023
Government of Odisha

Published by
Planning & Convergence Department
Government of Odisha

All rights reserved. No part of this publication may be reproduced, stored or transmitted in any format by any means without the prior permission of the Government of Odisha

Prepared by
SDG Cell, Planning & Convergence Department
Government of Odisha, Bhubaneswar

End poverty in all its forms everywhere

1 NO POVERTY



Target/ Indicator No.	OSIF Indicator	Type of Indicator	Data Source	Periodicity	Lead Department(s)	Aligned Department(s)
1.1	By 2030, eradicate extreme poverty for all people everywhere, currently measured as people living on less than \$1.25 a day					
1.1.1	Percentage of population living below the poverty line	OC	NITI Aayog (Tendulkar Committee Estimates, 2013)	Non-periodic	All Departments	P&C (DE&S)
1.3	Implement nationally appropriate social protection systems and measures for all, including floors, and by 2030 achieve substantial coverage of the poor and the vulnerable					
1.3.3	Persons provided employment as a percentage of persons who demanded employment under Mahatma Gandhi National Rural Employment Guarantee Act (MGNREGA)	OP	MGNREGA-Scheme Data	Annual	PR&DW	A&FE F&ARD MS WR HT&H FE&CC
1.a	Ensure significant mobilization of resources from a variety of sources, including through enhanced development cooperation, in order to provide adequate and predictable means for developing countries, in particular least developed countries, to implement programmes and policies to end poverty in all its dimensions					
1.a.1.s	Proportion of expenditure made under Goal 1 of SDG Budget to total state government expenditure	OP	State Budget	Annual	Finance	All Departments
1.b	Create sound policy frameworks at the national, regional and international levels, based on pro-poor and gender-sensitive development strategies, to support accelerated investment in poverty eradication actions					
1.b.1	Proportion of expenditure made under Gender Budget to total state government expenditure	OP	State Budget	Annual	Finance W&CD	All Departments

Ensure inclusive and equitable quality education and promote lifelong learning opportunities for all

4 QUALITY EDUCATION



Target/ Indicator No.	OSIF Indicator	Type of Indicator	Data Source	Periodicity	Lead Department(s)	Aligned Department(s)
4.4	By 2030, substantially increase the number of youth and adults who have relevant skills, including technical and vocational skills, for employment, decent jobs and entrepreneurship					
4.4.1	Percentage of youth and adults (18-35 years) placed / employed out of those imparted skill/ vocational/ technical/ professional education/ training	OC	PMKVY/ DDUGKY-Scheme Data	Annual	SD&TE PR&DW MS HT&H MSME	

Achieve gender equality and empower all women and girls

5 GENDER EQUALITY



Target/ Indicator No.	OSIF Indicator	Type of Indicator	Data Source	Periodicity	Lead Department(s)	Aligned Department(s)
5.1	End all forms of discrimination against all women and girls everywhere					
5.1.2.s	Percentage gap between female Worker Population Ratio (WPR) and male WPR	OC	Periodic Labour Force Survey (PLFS)	Annual	PR&DW H&UD MSME HT&H MS Industries A&FE F&ARD FE&CC	L&ESI P&C (DES)
5.1.3.s	Female to male ratio of average wages/ salaries received per day by (i) Regular wage or salaried employees (ii) Self-employed (iii) Casual labour	OC	Periodic Labour Force Survey (PLFS)	Annual	H&UD MSME HT&H MS Industries A&FE F&ARD FE&CC	L&ESI
5.1.4.s	Female Labour Force Participation Rate (LFPR)	OC	Periodic Labour Force Survey (PLFS)	Annual	H&UD MSME HT&H MS Industries A&FE F&ARD FE&CC PR&DW	L&ESI

Ensure availability and sustainable management of water and sanitation for all

6 CLEAN WATER AND SANITATION



Target/ Indicator No.	OSIF Indicator	Type of Indicator	Data Source	Periodicity	Lead Department(s)	Aligned Department(s)
6.6	By 2020, protect and restore water-related ecosystems, including mountains, forests, wetlands, rivers, aquifers and lakes					
6.6.1	Percentage of territorial blocks marked (i) Critical (ii) Semi-critical out of total territorial blocks (Ground Water)	OC	National Compilation on Dynamic Ground Water Resources of India, CGWB	Non- periodic	WR	Industries MSME A&FE HT&H

Promote sustained, inclusive and sustainable economic growth, full and productive employment and decent work for all

8 DECENT WORK AND ECONOMIC GROWTH



Target/ Indicator No.	OSIF Indicator	Type of Indicator	Data Source	Periodicity	Lead Department(s)	Aligned Department(s)
8.1	Sustain per capita economic growth in accordance with national circumstances and, in particular, at least 7 per cent gross domestic product growth per annum in the least developed countries					
8.1.1	Annual growth rate of Gross State Domestic Product (GSDP) (adjusted to price changes) per capita	OC	State Income Division – DE&S	Annual	All Departments	P&C (DE&S)
8.2	Achieve higher levels of economic productivity through diversification, technological upgrading and innovation, including through a focus on high-value added and labour-intensive sectors					
8.2.1	Annual growth rate of Gross State Domestic Product (GSDP) per employed person	OC	State Income Division – DE&S	Annual	All Departments	P&C (DE&S)
8.2.4.s	Annual growth in services sector	OC	State Income Division – DE&S	Annual	All Departments	P&C (DE&S)
8.3	Promote development-oriented policies that support productive activities, decent job creation, entrepreneurship, creativity and innovation, and encourage the formalization and growth of micro-small- and medium-sized enterprises, including through access to financial services					
8.3.1	Percentage of workers engaged in informal sector (proprietary and partnership) enterprises among workers engaged in non-agriculture sector	OC	Periodic Labour Force Survey (PLFS)	Annual	L&ESI All Departments	P&C (DE&S)
8.5	By 2030, achieve full and productive employment and decent work for all women and men, including for young people and persons with disabilities, and equal pay for work of equal value					
8.5.1	Unemployment rate	OC	Periodic Labour Force Survey (PLFS)	Annual	All Departments	P&C (DE&S)
8.5.2	Worker Population Ratio (WPR) among male and female	OC	Periodic Labour Force Survey (PLFS)	Annual	All Departments	P&C (DE&S)
8.6	By 2020, substantially reduce the proportion of youth not in employment, education or training					
8.6.1	Unemployment rate for youth (15-29 years)	OC	Periodic Labour Force Survey (PLFS)	Annual	All Departments	P&C (DE&S)

Build resilient infrastructure, promote inclusive and sustainable industrialization and foster innovation


9 INDUSTRY, INNOVATION AND INFRASTRUCTURE



Target/ Indicator No.	OSIF Indicator	Type of Indicator	Data Source	Periodicity	Lead Department(s)	Aligned Department(s)
9.5	Enhance scientific research, upgrade the technological capabilities of industrial sectors in all countries, in particular developing countries, including, by 2030, encouraging innovation and substantially increasing the number of research and development workers per 1 million people and public and private research and development spending					

Target/ Indicator No.	OSIF Indicator	Type of Indicator	Data Source	Periodicity	Lead Department(s)	Aligned Department(s)
9.5.3	Number of patents granted per 1,00,000 population	OC	Department Data	Annual	S&T Industries MSME HT&H SD&TE All Departments	
9.a	Facilitate sustainable and resilient infrastructure development in developing countries through enhanced financial, technological and technical support to African countries, least developed countries, landlocked developing countries and small island developing States					
9.a.1.s	Percentage of capital outlay on infrastructure development to total state government expenditure	OP	State Budget	Annual	Finance All Departments	
9.b	Support domestic technology development, research and innovation in developing countries, including by ensuring a conducive policy environment for, inter alia, industrial diversification and value addition to commodities					
9.b.1.s	Percentage of Micro, Small & Medium Enterprises (MSMEs) assisted/ incentivised for diversification, modernization and bringing-in new technology	OP	Department Data	Annual	MSME All Departments	

Reduce inequality within and among countries

10 REDUCED INEQUALITIES


Target/ Indicator No.	OSIF Indicator	Type of Indicator	Data Source	Periodicity	Lead Department(s)	Aligned Department(s)
10.1	By 2030, progressively achieve and sustain income growth of the bottom 40 per cent of the population at a rate higher than the national average					
10.1.1	Growth rate of household expenditure per capita among the bottom 40 percent of the population	OC	National Sample Survey -Monthly Per Capita Consumer Expenditure (NSS- MPCE)	Non- Periodic	All Departments	P&C (DE&S)
10.1.2.s	Palma ratio of household expenditure	OC	National Sample Survey -Monthly Per Capita Consumer Expenditure (NSS- MPCE)	Non- Periodic	All Departments	P&C (DE&S)
10.3	Ensure equal opportunity and reduce inequalities of outcome, including by eliminating discriminatory laws, policies and practices and promoting appropriate legislation, policies and action in this regard					
10.3.1	Unemployment rate among SCs and STs	OC	Periodic Labour Force Survey (PLFS)	Annual	All Departments	ST&SC Devt. P&C (DE&S)
10.4	Adopt policies, especially fiscal, wage and social protection policies, and progressively achieve greater equality					
10.4.1.s	Percentage of expenditure incurred for the welfare of SCs and STs	OC	State Budget	Annual	ST&SC Devt. Finance All Department	

Ensure sustainable consumption and production patterns

12 RESPONSIBLE CONSUMPTION AND PRODUCTION



Target/ Indicator No.	OSIF Indicator	Type of Indicator	Data Source	Periodicity	Lead Department(s)	Aligned Department(s)
12.4	By 2020, achieve the environmentally sound management of chemicals and all wastes throughout their life cycle, in accordance with agreed international frameworks, and significantly reduce their release to air, water and soil in order to minimize their adverse impacts on human health and the environment					
12.4.1	Percentage of hazardous waste recycled/ treated to total hazardous waste generated	OC	State Pollution Control Board (SPCB)/ Swachh Survekshan	Annual	FE&CC L&ESI Industries MSME HT&H	
12.7	Promote public procurement practices that are sustainable, in accordance with national policies and priorities					
12.7.1.s	Percentage of annual value of goods and services procured by state government departments/ agencies from Micro, Small & Medium Enterprises (MSMEs) located in the state	OP	Department Data	Annual	MSME	All Departments

Promote peaceful and inclusive societies for sustainable development, provide access to justice for all and build effective, accountable and inclusive institutions at all levels

16 PEACE, JUSTICE AND STRONG INSTITUTIONS



Target/ Indicator No.	OSIF Indicator	Type of Indicator	Data Source	Periodicity	Lead Department(s)	Aligned Department(s)
16.6	Develop effective, accountable and transparent institutions at all levels					
16.6.1.s	Percentage of services delivered end to end online against total services provided under Odisha Right to Public Services Act, 2012 etc.	OC	Odisha Right to Public Services Act (ORTPSA)/ Department Data	Real time	All Departments	GA&PG
16.6.3.s	Percentage of services delivered against applications received within stipulated time frame under Odisha Right to Public Services Act, 2012 etc.	OC	Odisha Right to Public Services Act (ORTPSA)/ Department Data	Real time	All Departments	GA&PG

Strengthen the means of implementation and revitalize the global partnership for sustainable Development



Target/ Indicator No.	OSIF Indicator	Type of Indicator	Data Source	Periodicity	Lead Department(s)	Aligned Department(s)
17.1	Strengthen domestic resource mobilization, including through international support to developing countries, to improve domestic capacity for tax and other revenue collection					
17.1.1	Total government revenue as a percentage of Gross State Domestic Product (GSDP)	OP	State Income Division - DE&S/ State Budget	Annual	Finance	All Departments



NOTES

A series of horizontal dotted lines for writing notes.



NOTES

A series of horizontal dotted lines for writing notes.



NOTES

A series of horizontal dotted lines for writing notes.



NOTES

A series of horizontal dotted lines for writing notes.



Planning & Convergence Department,
Government of Odisha